

# *Butler County Sheriff's Office*



## *1998 ANNUAL REPORT*

### *THE BUTLER COUNTY MAIN JAIL*

*Prepared by:  
A/Capt. Norman E. Lewis*



# **Butler County Sheriff's Office**

**Operations & Investigations**  
**301 South Third Street Hamilton, Ohio 45011**  
Operations & Investigations - 887-3640

**Harold Don Gabbard**  
SHERIFF

**Jail: 123 Court Street Hamilton, Ohio 45011**  
Hamilton - 887-3010 • Middletown - 424-2456

**Richard K. Jones**  
CHIEF DEPUTY

## **1998 Annual Report Summary**

The Butler County currently operates two (2) jails, the Main Jail is considered to be a "Maximum Security" facility. The Main Jail houses those prisoners that are awaiting trial or those inmates convicted of serious or violent crimes. Inmates at the Main Jail are "Locked Down" in cells and movement within the jail is restricted. Once convicted, some inmates are transported by Jail personnel, to various prison systems throughout the State of Ohio. Some non-violent offenders are transported to the Butler County Correctional Complex/Drug and Alcohol Resolutions, Inc. facility, to help ease Jail overcrowding.

The Corrections Division of the Butler County Main Jail is also responsible for Court Security, Records and medical Services. This is constructed of: forty-five (45) Deputies and Corrections Officer, which provide the safety and security of the compound; twelve (12) Court Security personnel, which provide security and transportation for County Court systems; twenty-two (22) medical Service personnel, which provide twenty-four (24) hour medical service to the inmates incarcerated at both the main Jail and Resolutions and two (2) records clerks, who keep track all reports and records for prisoners and answer civilian requests for reports and information.

In 1998, we booked over 4000 inmates into the Main Jail, with an average length of stay of 13 days. Charges ranged anywhere from Murder and Homicide to petty theft and DUI's.

The Butler County Jail was constructed to house only 138 inmates on a daily basis. The average daily headcount is currently at 180 inmates, with some days topping over 200 inmates. Needless to say, Butler County is in desperate need of a new and larger "Maximum Security" jail. An every day occurrence at the Main Jail and at the Resolutions Jail, is the practice of turning away prisoners whom have been arrested on various charges throughout Butler County, due to Jail Overcrowding.

This report consists of statistical data collected in regards to the following:  
Billing/Auditor information, Court Services, Medical Services, Classification Reports and General Inmate statistics.

Respectfully,

Capt. Charlie Profitt  
Warden

**BUTLER COUNTY MAIN JAIL  
1998 ANNUAL REPORT  
BILLING & AUDITOR STATISTICS**

Butler County is able to recoup some expenses from the Jail by billing certain Municipalities for Boarding of Prisoners. By State Law, Counties cannot bill for prisoners charged under State Statute. Prisoners charged under Municipal ordinance can be billed for. Butler County charges all Butler County Courts \$55.00 per day per inmate.

**Chart #1 Courts**

<b>Amounts Billed to Each Court</b>	
<b>Court</b>	<b>Amount Billed</b>
Fairfield Municipal Court	\$54,560.00
Hamilton Municipal Court	\$501,875.00
Trenton Mayors Court	\$55.00
City of Oxford	\$220.00
<b>TOTALS</b>	<b>\$556,710.00</b>

**Chart #2 Auditor**

<b>Amounts Deposited with the Butler County Auditor</b>	
January	\$27,060.00
February	\$29,755.00
March	\$42,240.00
April	\$50,325.00
May	\$47,905.00
June	\$41,800.00
July	\$40,040.00
August	\$52,085.00
September	\$58,135.00
October	\$55,825.00
November	\$60,995.00
December	\$50,545.00
<b>TOTALS</b>	<b>\$556,710.00</b>

# BUTLER COUNTY MAIN JAIL

## 1998 Annual Report

### Court Services Summary

The primary function of Court Services is to provide and maintain a safe environment within the Courthouse. This post is manned by One (1) Sergeant as well as ten (10) other Deputies Sheriff's. Security is supplied to the Butler County Juvenile Court, Butler County Children Services, Butler County Human Services (Hamilton and Middletown Branches) and the Butler County Courthouse. Deputies provide additional alarm services to the Butler County Administration Building, Butler County Soldier & Sailor Monument, Butler County Child Support Enforcement Division and PIC/ETA. Persons entering the Security Post of the butler County Common Pleas Courthouse will be stopped inside the doors and asked to place any carry in baggage on the x-ray machine conveyor belt and then asked to empty everything from their pockets onto the table before passing through the metal detectors. Should the person cause an alarm, that person will be hand scanned with a hand held metal detector.

During the year of 1998, Court Services staff screened 294,031 employees and visitors entering into the Courthouse and X-rayed 309,524 incoming packages. Deputies responded to 12 fire alarms as well as 47 duress alarms activated in the Courthouse and Administration Building. Court Services Deputies confiscated 2,412 pieces of contraband brought into the Courthouse.

The following is a chart of contraband items confiscated and services supplied for the Juvenile Court and Common Pleas Court in 1998:

ITEM	Juvenile Court	Common Pleas Court	Totals
Knives	533	982	1515
Mace	141	173	314
Stun Gun	3	1	4
Camera	42	0	42
Recorders	49	0	49
Miscellaneous	156	323	479
Squad Runs	5	3	8
Stand By	60	65	125
Civil Papers	0	18	18
Juvenile Arrests	53	0	53
Adult Arrests	27	25	52
Reports	14	69	83
Escorts	10	88	98
Disturbances	47	37	84
Tows	7	0	7
Prisoner Escorts	8	237	245
Menacing	4	0	4
Drugs	6	3	9
Disorderly Conduct	2	2	4
101 Issued	4	0	4
Resisting Arrests	1	3	4
Assault on Police Officer	1	0	1
Citations	12	10	22
Illegal Conveyance	1	0	1
Fire Alarms	4	8	12
Panic Alarms	15	32	47
Total Alarms	19	40	59

# BUTLER COUNTY MAIN JAIL

## 1998 Annual Report

### Inmate Discipline Summary Report

Resolutions inmate discipline is tracked annually, in accordance with Ohio Minimum Jail Standards, violations are divided into three categories, which are as follows:

1. **Minor Violations** - Violations which require only a verbal warning or adjustment from staff.
2. **Major Violations** - Violations which require a Disciplinary Hearing, but do not necessarily constitute a threat to the security and safety of the facility.
3. **Serious Violations** - Violations which constitute a threat to the security and safety of the facility – They always require a Disciplinary Hearing.

When a Disciplinary Hearing is conducted, the inmate has Due Process Requirements, that are set forth by Minimum Jail Standards and certain inmate privileges can be suspended for set periods of time. Inmates can also be placed in Administrative Segregation.

The following chart reflects Inmate Discipline for the year of 1998:

	Minor Violations	Major Violations	Serious Violations
TOTALS	41	89	128

**BUTLER COUNTY MAIN JAIL**  
**1998 Annual Report**  
**Incident Report Summary**  
**For March – December 1998**

The following chart reflects Incident Reports generated for the period of March 1998 to December 1998. This is the time period of which we implemented a new tracking system for Incident Reports completed by Staff members.

<b>Type of Report</b>	<b>Total Number of Reports</b>	<b># Deemed Critical Incidents</b>
Inmate to Inmate Assault	16	4
Inmate to Staff Assault	6	
Inmate Disturbance	31	3
Facility Damage	5	
Medical Problem / Complaint	57	5
Food Service Problem / Complaint	8	1
Disciplinary Problem	66	
Maintenance Problem	27	1
Escape or Attempt to Escape	1	
Criminal Complaint	15	15
Contraband	31	2
Safety of Security Issue	31	2
Hate / Bias Problem	1	
Shakedown Reports	54	
Administrative Issue	32	1
Use of Force	5	
Forensic	32	
Suicide / Attempted Suicide	9	1
Death Investigation	0	
Alarm Responses	26	
Use of Restraint Chair	12	
Miscellaneous	15	
<b>Total Number of Reports</b>	<b>480</b>	<b>35</b>

# BUTLER COUNTY MAIN JAIL

## 1998 Annual Report

### Medical Services Summary

Inmates at the Butler County Main Jail can receive Medical Treatment on a daily basis. The Butler County Medical Services Division provides Medical Care for inmates twenty-four (24) hours a day three hundred sixty-five (365) days a year. Dr. Robert Gabriele is the staff physician and oversees all Medical treatment to Butler County inmates.

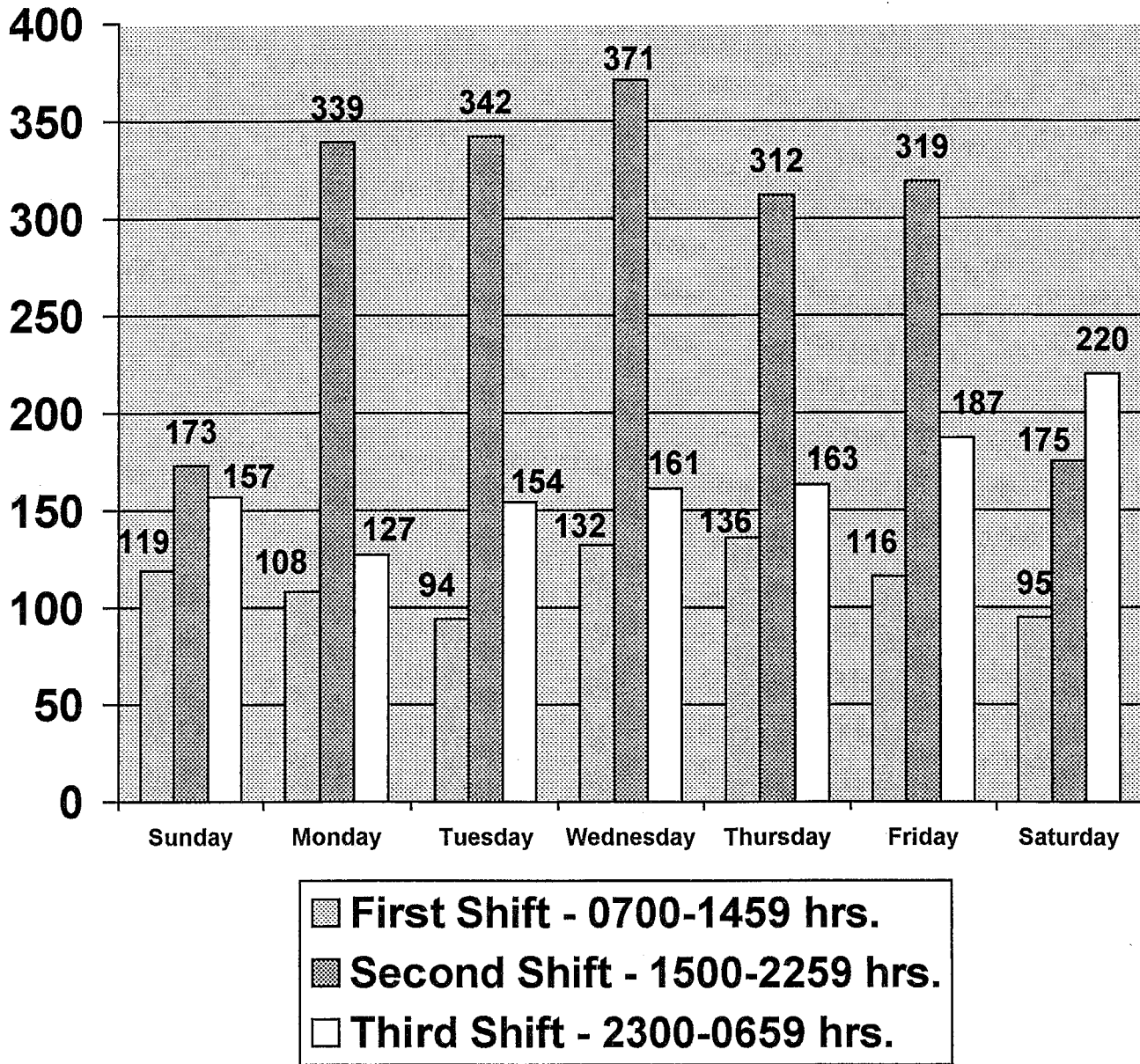
The following table is a summary of Medical Services provided to inmates during 1998.

MEDICAL SERVICE DESCRIPTION	TOTAL
Number of Inmates Screened	3272
Paramedic Sick Call	2853
Jail Physician Sick Call	2296
# of Inmates Seen by Forensic or Case Management	369
RX Dosages Issued	28,236
Lab Procedures	732
Radiology Tests	5
Planned Parenthood Appointments	15
Dentist Appointments	21
Emergency Room Transports	29
Physician Appointments	23
Outpatient	5
EKG's	1

This summary was taken from Medical Monthly Reports submitted by Butler County Medical Services Staff Members.

# BUTLER COUNTY MAIN JAIL 1998 Annual Report Bookings by Weekday and Shift

The following chart dictates the total number of inmates booked by weekday and by shift, for the year of 1998.



# BUTLER COUNTY MAIN JAIL

## 1998 Annual Report

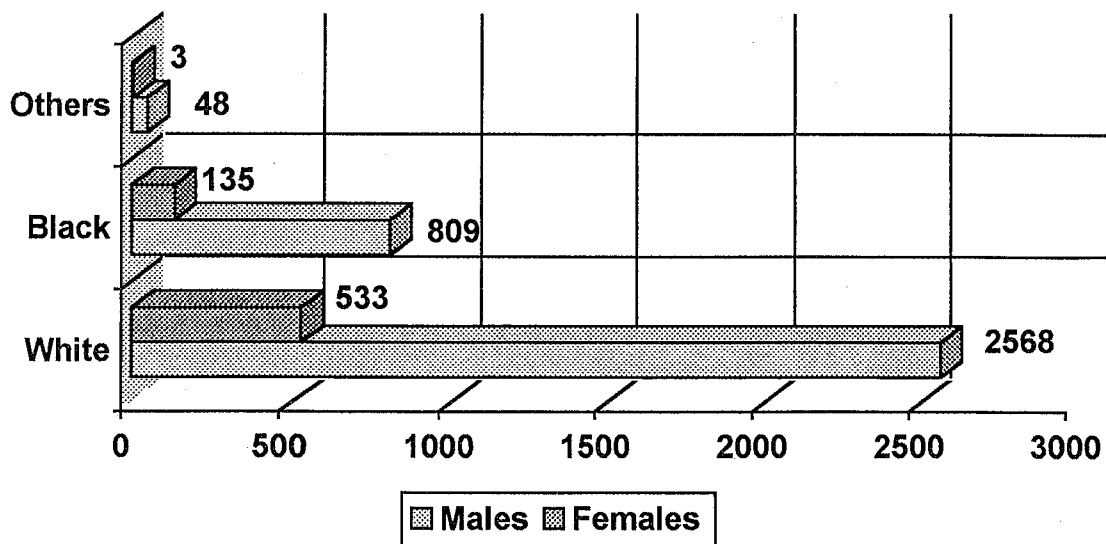
### Inmate Population by Race

Total White Males = 2568  
Total White Females = 533  
Total WHITES = 3101

Total Black Males = 809  
Total Black Females = 135  
Total BLACKS = 944

Total Other Males = 48  
Total Other Females = 3  
Total OTHER = 51

Total Booked Inmates for 1998 = 4096

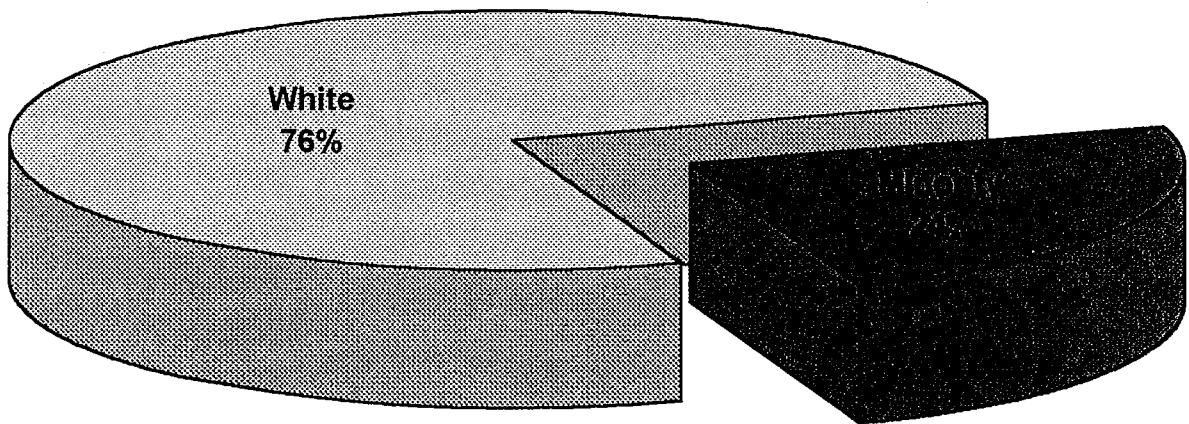


# BUTLER COUNTY MAIN JAIL

## 1998 Annual Report

### Total Inmate Booked by Race

- Total White Inmates Booked = 3101
- Total Minority Inmates Booked = 995
- Total ALL Inmates Booked = 4096



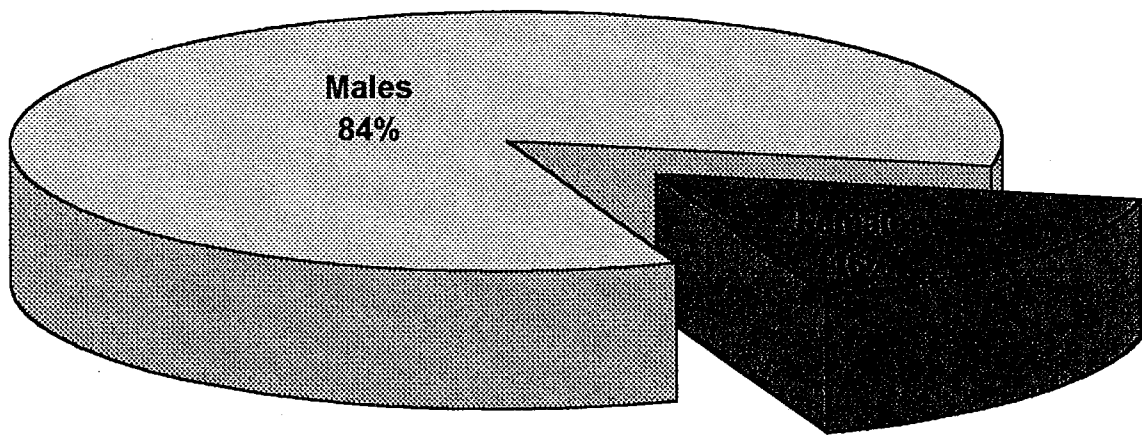
■ White ■ Minority

# BUTLER COUNTY MAIN JAIL

## 1998 Annual Report

### Total Inmate Booked

- Total Male Inmates Booked = 3425
- Total Female Inmates Booked = 671
- Total ALL Inmates Booked = 4096



■ Males ■ Females

# BUTLER COUNTY MAIN JAIL

## 1998 Annual Report

### Average Length of Stay by Age

18 - 25 Years Old - Average = 36.83%

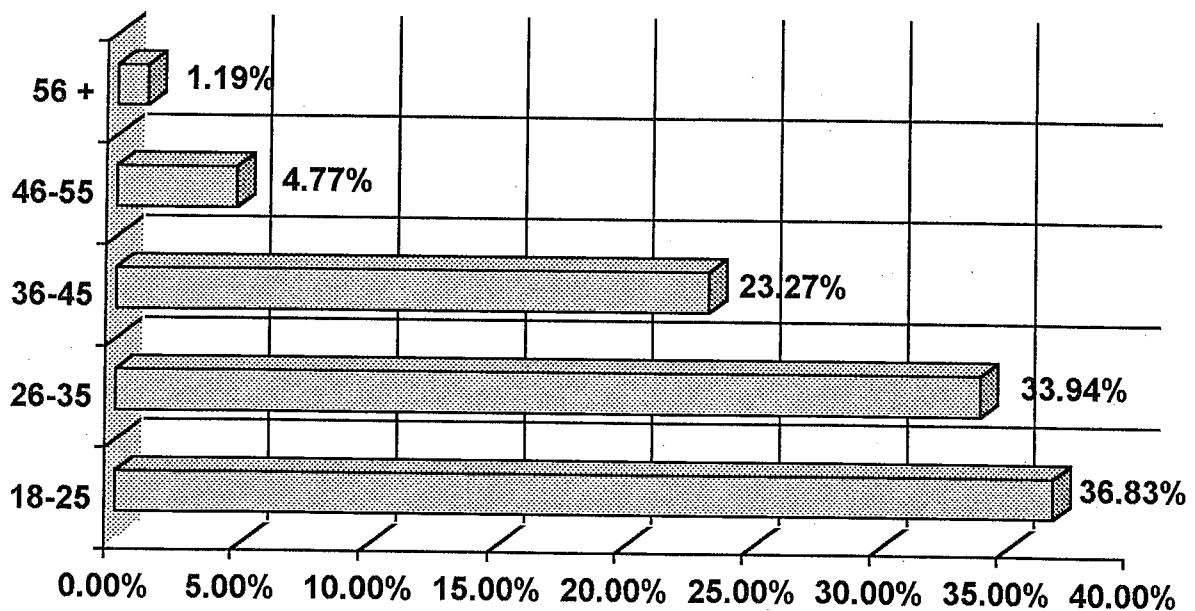
26 - 35 Years Old - Average = 33.94%

36 - 45 Years Old - Average = 23.27%

46 - 55 Years Old - Average = 4.77%

56 + Years Old - Average = 1.19%

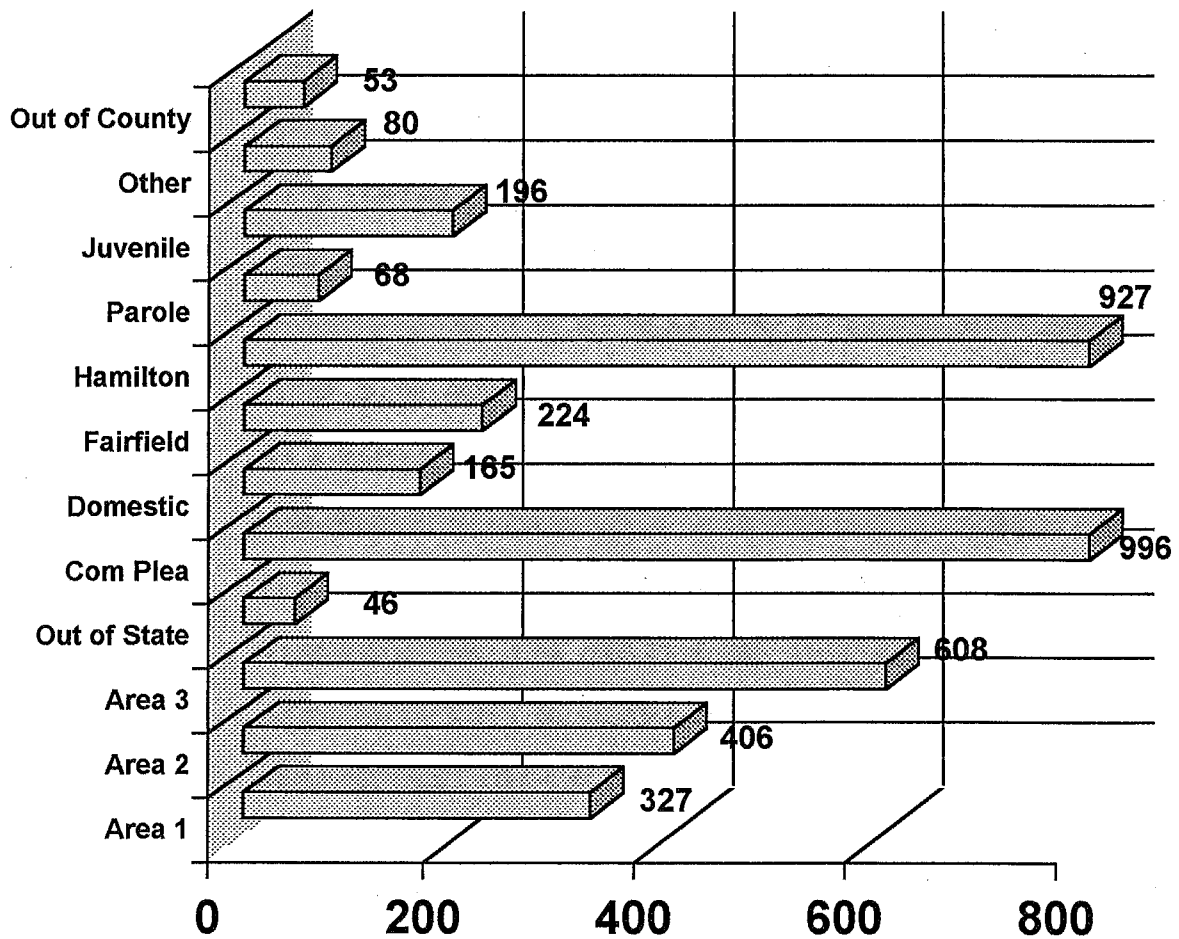
Total Average Length of Stay = 13.29 Days



# BUTLER COUNTY MAIN JAIL

## 1998 Annual Report

### Inmate Commitments by Court

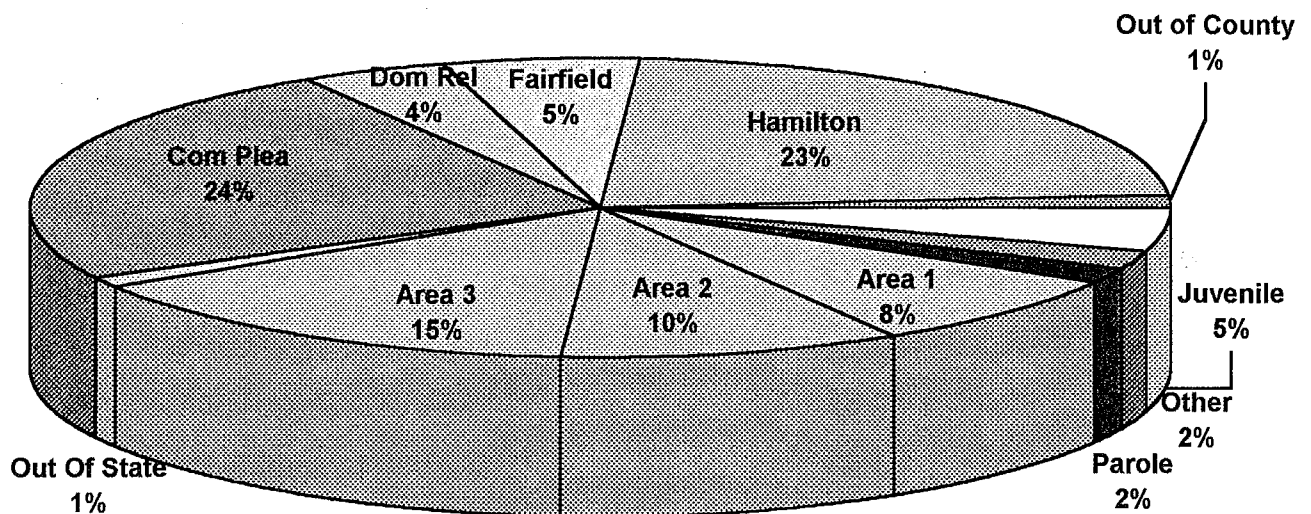


# BUTLER COUNTY MAIN JAIL

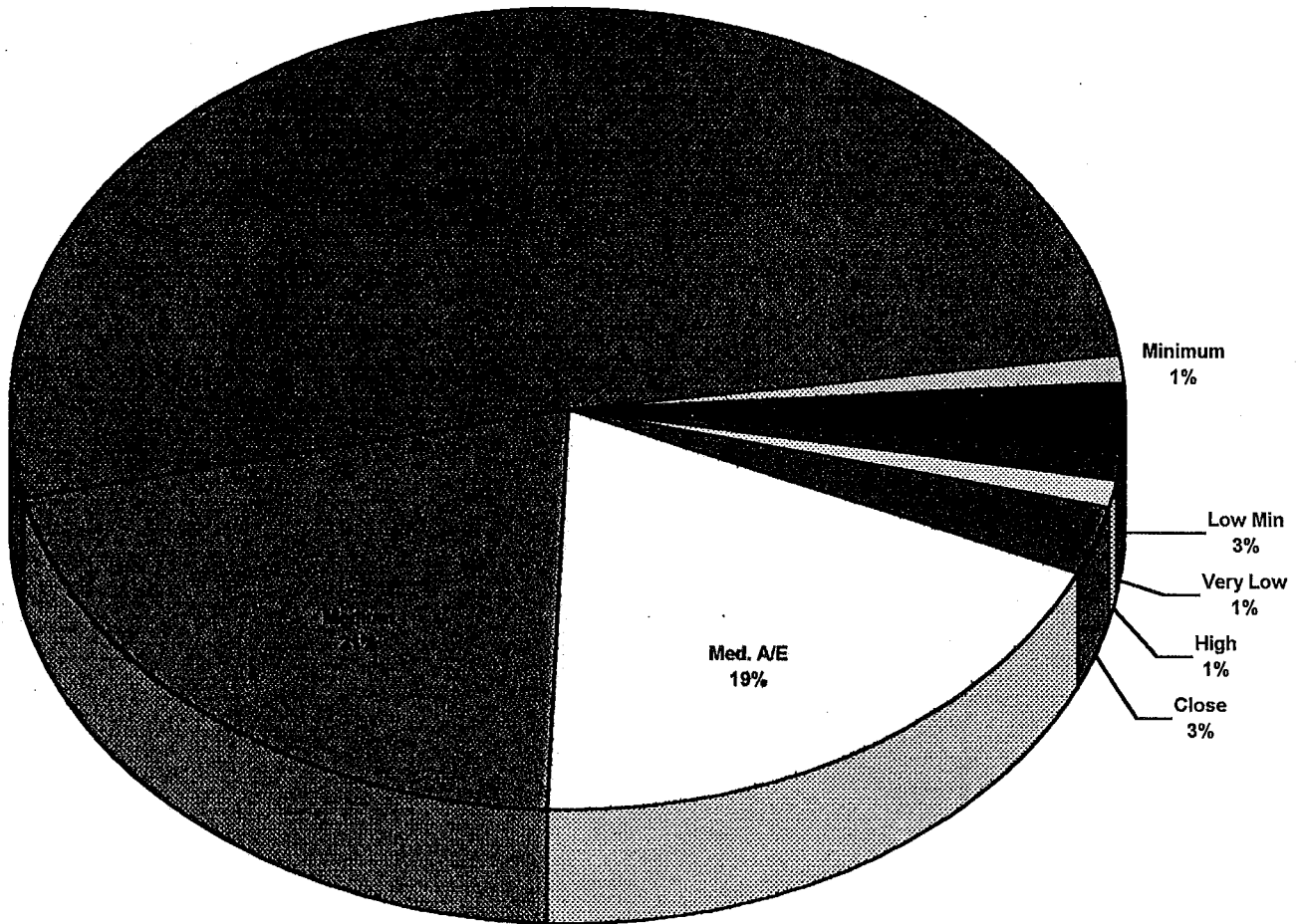
## 1998 Annual Report

### Inmates Commitments by Court (Percentage)

0 = Less Than 1 %



# BUTLER COUNTY MAIN JAIL 1998 ANNUAL REPORT CLASSIFICATION



**Male Inmates = 1176 - 86.92%**

**Female Inmates = 177 - 13.1%**

**Total Inmates = 1353**

02/17/99

BUTLER COUNTY JUSTICE INFO SYS  
CLASSIFICATION STATUS REPORT  
01/01/98 TO 12/31/98

Inmates booked in time period: 4078

Inmates released in time period: 4066

Inmates with original classification in time period: 1354

percent of booked: 33.20

Security level of classified inmates in time period

SEC.	Count	%
MAX	39	2.880
MED	1247	92.09
MIN	68	5.022
( 1354 TOTAL)		

Custody level of classified inmates in time period

CLASSIFICATION	Count	%
HIGH	2	0.1477
CLOSE	37	2.7326
MED.A/E	263	19.4239
MEDIUM	283	20.901
MED.PRE	701	51.7725
MINIMUM	8	0.5908
LOW MIN	44	3.2496
VERY LOW	16	1.1817
( 1354 TOTAL)		

Classification officer

CLAS.OFF	Count	%
HALL, DEWEY	1218	89.823
HALL, DEWEY	67	4.941
TURE, FELICIA	70	5.1622
RUNNELLS, TAMMY	1	0.0737

02/17/99  
 BUTLER COUNTY JUSTICE INFO SYS  
 CLASSIFICATION STATUS REPORT  
 01/01/98 TO 12/31/98

CLASSIFICATION BREAKDOWN BY SEX

Sex of Classified Inmates

SEX	Count	%
F	177	13.082
M	1176	86.918
( 1353 TOTAL)		

Male Classified Inmates: 1176 ( 86.918 % of Classified inmates)

Custody Level of Male Inmates

CLASSIFICATION	Count	%
1. HIGH (MAX)	2	0.1701
2. CLOSE (MAX)	34	2.8912
3. MED.A/E (MED)	241	20.493
4. MEDIUM (MED)	246	20.918
5. MED. PRE(MED)	598	50.850
6. MINIMUM (MIN)	8	0.6803
7. LOW MIN (MIN)	32	2.7211
8. VERY LOW(MIN)	15	1.2755
( 1176 TOTAL)		

Female Classified Inmates: 177 ( 13.082 % of classified inmates)

Custody Level of Female Inmates

CLASSIFICATION	Count	%
1. HIGH (MAX)	0	
2. CLOSE (MAX)	3	1.6949
3. MED.A/E (MED)	22	12.429
4. MEDIUM (MED)	37	20.904
5. MED. PRE(MED)	102	57.627
6. MINIMUM (MIN)	0	
7. LOW MIN (MIN)	12	6.7797
8. VERY LOW(MIN)	1	0.565
( 177 TOTAL)		

HIGH RISK AND SPECIAL CONDITIONS

(for inmates classified during period)

Inmates with High Risk flagged: 21 ( 1.5521 % of classified inmates)

HIGH RISK	Count	%
ASSAULTIVE	2	9.
BEHAVIOR WATCH	2	9.
ESCAPE	3	14
GANG AFFILIATION		0
GANG MEMBER		0
MENTAL	10	47
PAST SUICIDAL RISK	1	4.
SUICIDAL PROTECTIV	3	14
SUICIDAL		0

BUTLER COUNTY JUSTICE INFO SYS  
 CLASSIFICATION STATUS REPORT  
 01/01/98 TO 12/31/98

Inmates with Special Condition flagged: 9 ( 0.665 % of classified inmates)

SPECIAL CONDITION	Count	%
ALCOHOL/DRUG WITHDRAWA	1	11.111
FIRST TIME OFFENDER		0
HANDICAPPED	1	11.111
Released Booking		0
JUVENILE	4	44.444
MEDICAL	3	33.333
PREGNANT		0
WITNESS PROTECTION		0
	( 9 TOTAL)	

OVERRIDES during report period -

Number and Rate of Override Use: 83 ( 6.1345 %)

Overrides by Custody Level, Reason, and officer	Count	%
Overriden from/to REASON ORIG.OFF		
LOW MIN to MED PRE SENT FROM RESO HALL, DEWEY	1	1.204
LOW MIN to MEDIUM SENTENCED TO PRIS HALL, DEWEY	1	1.204
MINIMUM to MEDIUM SENTENCED TO PRIS HALL, DEWEY	1	1.204
MED.A/E to MEDIUM ROBBERY WAS 1981 HALL, DEWEY	1	1.204
MINIMUM to MEDIUM SENTENCED TO PRIS HALL, DEWEY	1	1.204
MINIMUM to MEDIUM SENTENCED TO PRIS HALL, DEWEY	1	1.204
MEDIUM to MED.A/E MENTAL STATE HALL, DEWEY	1	1.204
MINIMUM to MEDIUM SENTENCED TO PRIS HALL, DEWEY	1	1.204
LOW MIN to MEDIUM FORENSIC HALL, DEWEY	1	1.204
MINIMUM to MEDIUM SENTENCED TO PRIS HALL, DEWEY	1	1.204
MEDIUM to MED.A/E ATT.ESCAPE AT RES HALL, DEWEY	1	1.204
MED.A/E to MEDIUM ROBBERY 10 YRS AG HALL, DEWEY	1	1.204
MINIMUM to MEDIUM SENTENCED TO PRIS HALL, DEWEY	1	1.204
MED.A/E to MINIMUM NO PROBLEMS IN PA HALL, DEWEY	1	1.204
LOW MIN to MEDIUM SENTENCED TO PRIS HALL, DEWEY	1	1.204
MINIMUM to MEDIUM SENTENCED TO PRIS HALL, DEWEY	1	1.204
MED.A/E to MEDIUM NO PROBLEMS IN PA HALL, DEWEY	1	1.204
MED.A/E to MEDIUM CONVICTION WAS 19 HALL, DEWEY	1	1.204
MINIMUM to MEDIUM SENTENCED TO PRIS HALL, DEWEY	1	1.204
MINIMUM to MEDIUM SENTENCED TO PRIS HALL, DEWEY	1	1.204
MED PRE to MED.A/E TAMP/MURDER CASE HALL, DEWEY	1	1.204
MED PRE to MED.A/E VICTIM UNDER 13YO HALL, DEWEY	1	1.204
MED PRE to MED.A/E ESCAPE/COURT ROOM HALL, DEWEY	1	1.204
MED PRE to MED.A/E ESCAPE CHARGE HALL, DEWEY	1	1.204
MED.A/E to MEDIUM NO PROBLEMS IN PA HALL, DEWEY	1	1.204
MED.A/E to MEDIUM PAST CHARGE HALL, DEWEY	1	1.204
MINIMUM to MEDIUM SENTENCED TO PRIS HALL, DEWEY	1	1.204
MED.A/E to MEDIUM NO PROBLEMS IN PA HALL, DEWEY	1	1.204
MEDIUM to MED.A/E ESCAPE FROM WARRA HALL, DEWEY	1	1.204
MINIMUM to MEDIUM SENTENCED TO PRIS HALL, DEWEY	1	1.204
MEDIUM to MED.A/E PROBLEMS IN PAST HALL, DEWEY	1	1.204
MED PRE to MED.A/E P/P HALL, DEWEY	1	1.204
MINIMUM to MEDIUM SENTENCED TO PRIS HALL, DEWEY	1	1.204
MINIMUM to MEDIUM SENTENCED TO PRIS HALL, DEWEY	1	1.204
MED.A/E to MEDIUM NO PROBLEMS IN PA HALL, DEWEY	1	1.204
MIN to MEDIUM SENTENCED TO PRIS HALL, DEWEY	1	1.204
MINIMUM to MEDIUM SENTENCED TO PRIS HALL, DEWEY	1	1.204
LOW MIN to MEDIUM FORENSIC HALL, DEWEY	1	1.204
MINIMUM to MEDIUM SENTENCED TO PRIS HALL, DEWEY	1	1.204
LOW MIN to MEDIUM FORENSIC HALL, DEWEY	1	1.204
MED PRE to MED.A/E ESCAPE CHARGE HALL, DEWEY	1	1.204
MINIMUM to MEDIUM SENTENCED TO PRIS HALL, DEWEY	1	1.204

MED.A/E to MEDIUM	NO PROBLEMS	HALL, DEWEY	1	1.204
MED.A/E to MAX(C)	CRIMINAL HISTORY	HALL, DEWEY	1	1.204
MINIMUM to MEDIUM	SENTENCED TO PRIS	HALL, DEWEY	1	1.204
MED.A/E to MEDIUM	NO PROBLEMS IN PA	HALL, DEWEY	1	1.204
MINIMUM to MED.A/E	P/P	HALL, DEWEY	1	1.204
MED PRE to MED.A/E	WALKAWAY FROM CCC	HALL, DEWEY	1	1.204
MED.A/E to MEDIUM	NO PROBLEMS IN PA	HALL, DEWEY	1	1.204
MEDIUM to MINIMUM	TRUSTY	HALL, DEWEY	1	1.204
LOW MIN to MEDIUM	SENTENCED TO PRIS	HALL, DEWEY	1	1.204
MED.A/E to MEDIUM	F/A WAS 1976	HALL, DEWEY	1	1.204
MED PRE to MED.A/E	ESCAPE CHARGE	HALL, DEWEY	1	1.204
MINIMUM to MEDIUM	SENTENCED TO PRIS	HALL, DEWEY	1	1.204
MED.A/E to MEDIUM	NO PROBLEMS IN PA	HALL, DEWEY	1	1.204
MEDIUM to MED.A/E	AST P/O PENDING	HALL, DEWEY	1	1.204
MED PRE to MED.A/E	ESCAPE CHARGE	HALL, DEWEY	1	1.204
MAX(C) to HIGH	ODCR BEHAVIOR	HALL, DEWEY	1	1.204
MINIMUM to MEDIUM	SENTENCED TO PRIS	HALL, DEWEY	1	1.204
MINIMUM to MEDIUM	SENTENCED TO PRIS	HALL, DEWEY	1	1.204
LOW MIN to MED.A/E	RESO INCIDENT	HALL, DEWEY	1	1.204
MEDIUM to MED.A/E	INCIDENT AT RESO	HALL, DEWEY	1	1.204
MEDIUM to MED.A/E	ESCAPE PLAN AT RE	HALL, DEWEY	1	1.204
MED PRE to MED.A/E	VICTIM UNDER 13YO	HALL, DEWEY	1	1.204
LOW MIN to MED.A/E	INVOLVED JUV UND	TURE, FELICIA	1	1.204
MED.A/E to HIGH	INFO FROM MID/A10	HALL, DEWEY	1	1.204
MEDIUM to MED.A/E	PENDING ESCAPE	HALL, DEWEY	1	1.204
MEDIUM to MED.A/E	PENDING AST.P/O	HALL, DEWEY	1	1.204
MINIMUM to MEDIUM	SENTENCED TO PRIS	HALL, DEWEY	1	1.204
MINIMUM to MEDIUM	SENTENCED TO PRIS	HALL, DEWEY	1	1.204
MED.A/E to MEDIUM	NO PROBLEMS IN PA	HALL, DEWEY	1	1.204
MEDIUM to MAX(C)	PAST BEHAVIOR	HALL, DEWEY	1	1.204
MINIMUM to MEDIUM	SENTENCED TO PRIS	HALL, DEWEY	1	1.204
MED PRE to MED.A/E	ESCAPE CHARGE	HALL, DEWEY	1	1.204
LOW MIN to MEDIUM	SENTENCED TO PRIS	HALL, DEWEY	1	1.204
MINIMUM to MEDIUM	SENTENCED TO PRIS	HALL, DEWEY	1	1.204
LOW MIN to MEDIUM	MENTAL	HALL, DEWEY	1	1.204
MED.A/E to MEDIUM	L/S PROGRAM	HALL, DEWEY	1	1.204
MED.A/E to MEDIUM	CONVICTION WAS 19	HALL, DEWEY	1	1.204
MAX(C) to MEDIUM	NO PROBLEMS IN PA	HALL, DEWEY	1	1.204
MED.A/E to MEDIUM	NO PROBLEMS IN PA	HALL, DEWEY	1	1.204
MINIMUM to MEDIUM	SENTENCED TO CCC	HALL, DEWEY	1	1.204
LOW MIN to MED.A/E	FORENSIC	HALL, DEWEY	1	1.204
( 83 TOTAL)				

Overrides by officer

ORIG. OFF	Count	%
-----		
HALL, DEWEY	80	96.385
HALL, DEWEY	2	2.4096
TURE, FELICIA	1	1.2048
( 83 TOTAL)		

Overrides overridden up or down?

Overridden	Count	%
-----		
UP	63	75.903
DOWN	20	24.096
( 83 TOTAL)		

INMATES HOUSED OUTSIDE OF SECURITY/CUSTODY LEVEL

Total inmates mishoused during period: 188 ( 13.956 %)

BUTLER COUNTY JUSTICE INFO SYS  
 CLASSIFICATION STATUS REPORT  
 01/01/98 TO 12/31/98

MISHOUSING /ENT	DAY Total	DAYS MISHOUSED Avg/Days	% total & ADP	Inmate Count	Percent total Mishoused	
3-4,5,,,,,	93	93	0.5021	0.2548	1	0.5319
3-4,5,,,,,	232	232	1.2524	0.6356	1	0.5319
3-4,5,,,,,	224	224	1.2092	0.6137	1	0.5319
3-4,5,,,,,	180	180	0.9717	0.4932	1	0.5319
5-4,5,,,,,	166	3.4583	0.8961	0.4548	48	25.531
7-4,5,,,,,	267	26.7	1.4414	0.7315	10	5.3191
7-4,5,,,,,	104	104	0.5614	0.2849	1	0.5319
4-4,5,,,,,	161	7.6667	0.8691	0.4411	21	11.170
5-4,5,,,,,	100	100	0.5398	0.274	1	0.5319
3-4,5,,,,,	71	71	0.3833	0.1945	1	0.5319
3-4,5,,,,,	71	71	0.3833	0.1945	1	0.5319
3-4,5,,,,,	148	148	0.799	0.4055	1	0.5319
6-4,5,,,,,	72	72	0.3887	0.1973	1	0.5319
3-4,5,,,,,	267	267	1.4414	0.7315	1	0.5319
5-MED	212	212	1.1445	0.5808	1	0.5319
3-MED4,5,	69	69	0.3725	0.189	1	0.5319
4-MED4,5,1,	135	135	0.7288	0.3699	1	0.5319
5-MIN	155	155	0.8368	0.4247	1	0.5319
2-MIN3,4,5,	250	62.5	1.3496	0.6849	4	2.1277
3-MIN3,4,5,	155	155	0.8368	0.4247	1	0.5319
2-MIN3,4,5,	155	155	0.8368	0.4247	1	0.5319
3-MIN3,4,5,	162	162	0.8745	0.4438	1	0.5319
7-MIN3,4,5,	128	128	0.691	0.3507	1	0.5319
2-MIN3,4,5,	225	225	1.2146	0.6164	1	0.5319
2-MIN3,4,5,	212	212	1.1445	0.5808	1	0.5319
3-MIN3,4,5,	224	224	1.2092	0.6137	1	0.5319
MIN3,4,5,	51	51	0.2753	0.1397	1	0.5319
5-MIN	174	174	0.9393	0.4767	1	0.5319
2-MIN4,5,	180	180	0.9717	0.4932	1	0.5319
4-MIN4,5,2,	49	49	0.2645	0.1342	1	0.5319
3-MIN4,5,2,	190	190	1.0257	0.5205	1	0.5319
3-MIN4,5,2,	198	198	1.0689	0.5425	1	0.5319
4-MIN	245	245	1.3226	0.6712	1	0.5319
3-MIN4,5,	189	189	1.0203	0.5178	1	0.5319
3-MIN4,5,4,	167	167	0.9015	0.4575	1	0.5319
7-MIN4,5,4,	238	238	1.2848	0.6521	1	0.5319
5-MED	239	239	1.2902	0.6548	1	0.5319
3-MED4,5,	239	239	1.2902	0.6548	1	0.5319
3-MED4,5,	154	154	0.8314	0.4219	1	0.5319
3-MED4,5,4,	161	161	0.8691	0.4411	1	0.5319
6-MED4,5,4,	161	161	0.8691	0.4411	1	0.5319
4-MED	148	148	0.799	0.4055	1	0.5319
3-MED	84	84	0.4535	0.2301	1	0.5319
5-MED2,3,	89	89	0.4805	0.2438	1	0.5319
3-MED2,3,4,	92	92	0.4967	0.2521	1	0.5319
3-MED2,3,4,	225	225	1.2146	0.6164	1	0.5319
3-MED2,3,4,	128	128	0.691	0.3507	1	0.5319
3-MED2,3,4,	125	125	0.6748	0.3425	1	0.5319
2-MED2,3,4,	155	155	0.8368	0.4247	1	0.5319
3-MED2,3,4,	63	63	0.3401	0.1726	1	0.5319
3-MED	160	160	0.8637	0.4384	1	0.5319
3-MED	267	267	1.4414	0.7315	1	0.5319
3-MED4,5,	264	264	1.4252	0.7233	1	0.5319
2-MED4,5,3,	266	266	1.436	0.7288	1	0.5319
MED4,5,3,	100	100	0.5398	0.274	1	0.5319
2-MED4,5,3,	107	107	0.5776	0.2932	1	0.5319
7-MED4,5,3,	189	189	1.0203	0.5178	1	0.5319
2-MED4,5,3,	225	225	1.2146	0.6164	1	0.5319
3-MED4,5,3,	121	121	0.6532	0.3315	1	0.5319
3-MED4,5,3,	125	125	0.6748	0.3425	1	0.5319
3-MED4,5,3,	113	113	0.61	0.3096	1	0.5319

3-MED4,5,3,	113	113	0.61	0.3096	1	0.5319
2-MED4,5,3,	92	92	0.4967	0.2521	1	0.5319
2-MED4,5,3,	107	107	0.5776	0.2932	1	0.5319
7-MED4,5,3,	146	146	0.7882	0.4	1	0.5319
8-MED4,5,3,	265	265	1.4306	0.726	1	0.5319
3-MED4,5,3,	266	266	1.436	0.7288	1	0.5319
3-MED4,5,3,	152	152	0.8206	0.4164	1	0.5319
MED	225	225	1.2146	0.6164	1	0.5319
2-MED3,4,5,	254	254	1.3712	0.6959	1	0.5319
4-MED	254	254	1.3712	0.6959	1	0.5319
4-MED	245	245	1.3226	0.6712	1	0.5319
7-MED4,5,	197	197	1.0635	0.5397	1	0.5319
1-2	197	197	1.0635	0.5397	1	0.5319
2-23,4,5,6,	203	203	1.0959	0.5562	1	0.5319
2-23,4,5,6,	215	215	1.1607	0.589	1	0.5319
3-MED	210	210	1.1337	0.5753	1	0.5319
5-MED2,3,	57	57	0.3077	0.1562	1	0.5319
3-MED2,3,4,	225	225	1.2146	0.6164	1	0.5319
3-MED2,3,4,	96	96	0.5182	0.263	1	0.5319
3-MED2,3,4,	106	106	0.5722	0.2904	1	0.5319
4-MED	189	189	1.0203	0.5178	1	0.5319
2-MED3,4,5,	190	190	1.0257	0.5205	1	0.5319
7-MED3,4,5,	138	138	0.745	0.3781	1	0.5319
2-MED3,4,5,	65	65	0.3509	0.1781	1	0.5319
3-MED3,4,5,	272	272	1.4684	0.7452	1	0.5319
3-MED3,4,5,	271	271	1.463	0.7425	1	0.5319
3-MED	271	271	1.463	0.7425	1	0.5319
4-MED3,2,	56	56	0.3023	0.1534	1	0.5319
7-MED3,2,4,	72	72	0.3887	0.1973	1	0.5319
3-MED3,2,4,	225	225	1.2146	0.6164	1	0.5319
3-MED3,2,4,	96	96	0.5182	0.263	1	0.5319
7-MED3,2,4,	100	100	0.5398	0.274	1	0.5319
2-MED3,2,4,	261	261	1.409	0.7151	1	0.5319
5-MED3,2,4,	253	253	1.3658	0.6932	1	0.5319
2-MED3,2,4,	265	265	1.4306	0.726	1	0.5319
MED3,2,4,	50	50	0.2699	0.137	1	0.5319
5-MED3,2,4,	182	182	0.9825	0.4986	1	0.5319
5-MED	184	184	0.9933	0.5041	1	0.5319
3-MED4,5,6,	181	181	0.9771	0.4959	1	0.5319
3-MED4,5,6,	189	189	1.0203	0.5178	1	0.5319
3-MED4,5,6,	55	55	0.2969	0.1507	1	0.5319
2-MED4,5,6,	265	265	1.4306	0.726	1	0.5319
6-MED4,5,6,	161	161	0.8691	0.4411	1	0.5319
2-MED4,5,6,	168	168	0.9069	0.4603	1	0.5319
3-MED4,5,6,	161	161	0.8691	0.4411	1	0.5319
3-MED4,5,6,	225	225	1.2146	0.6164	1	0.5319
6-MED4,5,6,	239	239	1.2902	0.6548	1	0.5319
3-MED4,5,6,	196	196	1.0581	0.537	1	0.5319

-----  
18524

-----  
99.9999

-----  
99.9984

CLASSIFICATION STATUS

Classification review occurring in time period: 271 ( 74.246 avg.per day)

Inmates overdue for review as of today: 1032

112 class. reviews on or before due date. ( 41.328 %)

201 reviews conducted late ( 74.169 % of reviews done)

Days Overdue for Review (for 201 inmates)

Range from 1 to 22 ,average 4.0796 , medium 3

Tabulation of days from booking to classification

ORIG.WAIT	Count	%
1	516	22.386
2	230	9.9783
3	194	8.4165

4	4.9458	
5	78	3.3839
6	34	1.4751
7	21	0.9111
8	9	0.3905
9	1	0.0434
11	4	0.1735
12	2	0.0868
13	3	0.1302
16	2	0.0868
18	1	0.0434
19	2	0.0868
22	4	0.1735
27	3	0.1302
33	2	0.0868
35	6	0.2603
36	8	0.3471
37	5	0.2169
44	3	0.1302
45	5	0.2169
48	8	0.3471
49	7	0.3037
50	6	0.2603
51	5	0.2169
52	3	0.1302
53	7	0.3037
54	3	0.1302
55	9	0.3905
56	3	0.1302
57	7	0.3037
58	5	0.2169
59	7	0.3037
60	5	0.2169
61	2	0.0868
62	4	0.1735
63	3	0.1302
64	2	0.0868
65	6	0.2603
66	2	0.0868
67	3	0.1302
68	9	0.3905
69	7	0.3037
70	6	0.2603
71	8	0.3471
72	6	0.2603
73	7	0.3037
74	4	0.1735
75	11	0.4772
76	6	0.2603
77	5	0.2169
78	5	0.2169
79	3	0.1302
80	7	0.3037
81	7	0.3037
82	7	0.3037
83	8	0.3471
84	12	0.5206
85	6	0.2603
86	4	0.1735
87	8	0.3471
88	9	0.3905
89	8	0.3471
90	2	0.0868
91	4	0.1735
92	9	0.3905
93	9	0.3905
94	3	0.1302
95	6	0.2603
96	12	0.5206
97	7	0.3037

98		0.1302
99	10	0.4338
100	6	0.2603
101	9	0.3905
102	8	0.3471
103	4	0.1735
104	5	0.2169
105	8	0.3471
106	4	0.1735
107	6	0.2603
108	10	0.4338
109	6	0.2603
110	6	0.2603
111	7	0.3037
112	6	0.2603
113	13	0.564
114	4	0.1735
115	6	0.2603
116	4	0.1735
117	5	0.2169
118	6	0.2603
119	6	0.2603
120	5	0.2169
121	7	0.3037
122	6	0.2603
123	8	0.3471
124	3	0.1302
125	7	0.3037
126	3	0.1302
127	4	0.1735
128	3	0.1302
129	5	0.2169
130	3	0.1302
131	8	0.3471
132	5	0.2169
133	5	0.2169
134	8	0.3471
135	8	0.3471
136	6	0.2603
137	3	0.1302
138	7	0.3037
139	2	0.0868
140	9	0.3905
141	6	0.2603
142	6	0.2603
143	6	0.2603
144	5	0.2169
145	6	0.2603
146	5	0.2169
147	4	0.1735
148	5	0.2169
149	4	0.1735
150	2	0.0868
151	1	0.0434
152	1	0.0434
153	3	0.1302
154	9	0.3905
155	6	0.2603
156	2	0.0868
157	11	0.4772
158	6	0.2603
159	8	0.3471
160	4	0.1735
161	3	0.1302
162	5	0.2169
163	6	0.2603
164	6	0.2603
165	4	0.1735
166	2	0.0868
167	3	0.1302

168	4	0.1735
169	4	0.1735
170	2	0.0868
171	5	0.2169
172	5	0.2169
173	3	0.1302
174	4	0.1735
175	6	0.2603
176	5	0.2169
177	2	0.0868
178	6	0.2603
179	8	0.3471
180	4	0.1735
181	4	0.1735
182	7	0.3037
183	7	0.3037
184	7	0.3037
185	6	0.2603
186	6	0.2603
187	10	0.4338
188	4	0.1735
189	8	0.3471
190	4	0.1735
191	3	0.1302
192	4	0.1735
193	3	0.1302
194	4	0.1735
195	3	0.1302
196	5	0.2169
197	5	0.2169
198	6	0.2603
199	6	0.2603
200	4	0.1735
201	6	0.2603
202	4	0.1735
203	3	0.1302
204	1	0.0434
205	6	0.2603
206	5	0.2169
207	10	0.4338
208	1	0.0434
209	4	0.1735
210	5	0.2169
211	3	0.1302
212	5	0.2169
213	7	0.3037
214	2	0.0868
215	3	0.1302
216	3	0.1302
217	7	0.3037
218	6	0.2603
219	3	0.1302
220	5	0.2169
221	6	0.2603
222	3	0.1302
223	7	0.3037
224	6	0.2603
225	5	0.2169
226	4	0.1735
227	4	0.1735
228	4	0.1735
229	5	0.2169
230	4	0.1735
231	5	0.2169
232	3	0.1302
233	2	0.0868
234	2	0.0868
235	3	0.1302
236	3	0.1302
237	2	0.0868

238	3	0.1302
239	3	0.1302
241	3	0.1302
242	4	0.1735
243	2	0.0868
244	3	0.1302
245	2	0.0868
246	5	0.2169
247	6	0.2603
248	2	0.0868
249	2	0.0868
250	2	0.0868
251	4	0.1735
252	1	0.0434
253	4	0.1735
254	1	0.0434
255	1	0.0434
256	1	0.0434

( 2305 TOTAL)

228 inmates w/classification(s) performed late.  
 (more than 3 days after booking), 9.891 %

02/17/99

BUTLER COUNTY JUSTICE INFO SYS  
 CLASSIFICATION STATUS REPORT  
 01/01/98 TO 12/31/98

Total classified inmates housed during time period: 1347

Security level of classified inmates

SEC	Count	%
MAX	38	2.8211
MED	1241	92.130
MIN	68	5.0483
( 1347 TOTAL)		

Custody level of classified inmates

CLASSIFICATION	Count	%
1. HIGH (MAX)	2	0.1485
2. CLOSE (MAX)	36	2.6726
3. MED.A/E (MED)	264	19.5991
4. MEDIUM (MED)	280	20.7869
5. MED. PRE(MED)	697	51.7446
6. MINIMUM (MIN)	8	0.5939
7. LOW MIN (MIN)	44	3.2665
8. VERY LOW(MIN)	16	1.1878
( 1347 TOTAL)		

MISCONDUCTS of inmates classified during report period -

Inmates with misconducts recorded: 95 ( 7.05 % classified inmates housed du

Misconduct (Disciplinary) Totals by Security Level

SEC	TOTAL DISCP.	% OF TOT. CLASSIF.	% OF TOT. DISCP.	TOT. INMATES W/DISCP.	% OF TOT. INMATES
-----	--------------	--------------------	------------------	-----------------------	-------------------

MAX	15	15.789	10.948	11	15.789
MED	115	121.05	83.941	79	121.05
MIN	7	7.3684	5.1095	5	7.3684

137

95

Inmates with Minor misconducts recorded: 0

Minor Misconduct Totals by Security Level

SEC	TOTAL DISCP.	% OF TOT. CLASSIF.	% OF TOT. DISCP.	TOT. INMATES W/DISCP.	% OF TOT. INMATES
MAX		0	0		0
MED		0	0		0
MIN		0	0		0

0 Minor Misconducts ( 0 % of total)

01/17/99

BUTLER COUNTY JUSTICE INFO SYS  
CLASSIFICATION STATUS REPORT  
01/01/98 TO 12/31/98

Inmates with Major misconducts recorded: 0

Major Misconduct Totals by Security Level

SEC	TOTAL DISCP.	% OF TOT. CLASSIF.	% OF TOT. DISCP.	TOT. INMATES W/DISCP.	% OF TOT. INMATES
MAX		0	0		0
MED		0	0		0
MIN		0	0		0

0 Major Minsconducts ( 0 % of total)

Inmates with Serious misconducts recorded:

SEC	TOTAL DISCP.	% OF TOT. CLASSIF.	% OF TOT. DISCP.	TOT. INMATES W/DISCP.	% OF TOT. INMATES
MAX		0	0		0
MED		0	0		0
MIN		0	0		0

0 Serious Misconducts ( 0 % of total)

**BUTLER CO. SHERIFF OFFICE  
FOOD BILL**

<b>SIR: THIS IS THE FOOD BILLS FOR 1997 BY MONTH</b>				
<b>MONTH</b>	<b>FOOD USED</b>		<b>MEALS SERVED</b>	<b>COST PER MEAL</b>
Jan-97	\$ 13,375.29		15,908	\$ 0.84
Feb-97	\$ 14,858.16		15,140	\$ 0.98
Mar-97	\$ 15,440.76		16,337	\$ 0.95
Apr-97	\$ 15,311.45		15,883	\$ 0.96
May-97	\$ 15,617.91		16,934	\$ 0.92
Jun-97	\$ 15,577.74		15,825	\$ 0.98
Jul-97	\$ 16,565.44		17,136	\$ 0.97
Aug-97	\$ 16,590.01		16,360	\$ 1.01
Sep-97	\$ 17,814.94		15,006	\$ 1.19
Oct-97	\$ 17,116.86		16,430	\$ 1.04
Nov-97	\$ 17,178.62		15,952	\$ 1.08
Dec-97	\$ 16,654.62		15,866	\$ 1.05
<b>TOTAL</b>	<b>\$ 192,101.80</b>		<b>192,777</b>	<b>\$ 11.97</b>
<b>AVARAGE COST PER MEAL IS 1.00</b>				
<b>SIR : THIS IS THE FOOD BILLS FOR 1998 BY MONTH</b>				
<b>MONTH</b>	<b>FOOD USED</b>		<b>MEALS SERVED</b>	<b>COST PER MEAL</b>
Jan-98	\$ 17,092.66		16,458	\$ 1.04
Feb-98	\$ 16,054.89		14,764	\$ 1.09
Mar-98	\$ 15,991.68		16,508	\$ 0.97
Apr-98	\$ 16,707.77		15,462	\$ 1.08
May-98	\$ 17,979.48		16,009	\$ 1.12
Jun-98	\$ 16,543.07		15,946	\$ 1.04
Jul-98	\$ 19,247.53		16,352	\$ 1.18
Aug-98	\$ 15,544.64		17,383	\$ 0.89
Sep-98	\$ 12,344.56		16,133	\$ 0.77
Oct-98	\$ 15,390.40		16,031	\$ 0.96
Nov-98	\$ 13,559.79		16,853	\$ 0.80
Dec-98	\$ 15,040.58		17,018	\$ 0.88
<b>TOTAL</b>	<b>\$ 191,497.05</b>		<b>194,917</b>	<b>\$ 11.82</b>
<b>AVARAGE COST PER MEAL IS \$.99</b>				
<b>SIR: THIS IS THE FOOD BILL FOR 1999 BY MONTH</b>				
<b>MONTH</b>	<b>FOOD USED</b>		<b>MEALS SERVED</b>	<b>COST PER MEAL</b>
Jan-99				
Feb-99				
Mar-99				
Apr-99				
May-99				
Jun-99				
Jul-99				
Aug-99				
Sep-99				
Oct-99				
Nov-99				
Dec-99				
<b>TOTAL</b>	<b>\$ -</b>		<b>0</b>	<b>\$ -</b>